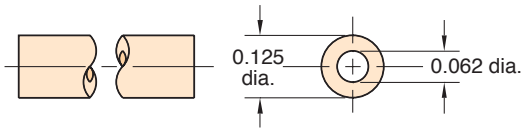
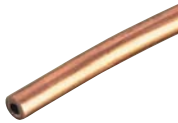




# CLIPPARD HOSE & TUBING

## 3811-1-RL

1/8" O.D. Copper Tubing



**Material:** High pressure copper

**Working Pressures:** to 2,500 psig

**Static Burst Pressure:** over 10,000 psig

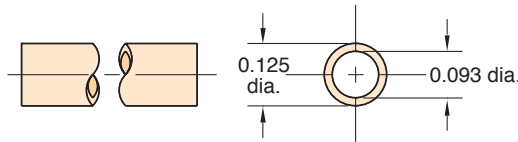
**Lengths Available:** 50'

**Bend Radius:** 3/8"

**Use With:** Ferrule tubing connectors: [3810-1](#), [3810-2](#), [11923](#)

## NYT1-0403-CLT-□

3/32" I.D. Nylon Tubing



**Material:** Semi-flexible nylon tubing

**Color:** Clear / Translucent

**Working Range:** to 250 psig

**Static Burst Pressure:** Approx. 1,000 psig

**Use With:** Ferrule tubing connectors: [11923](#), [3810-1](#), [3810-2](#)

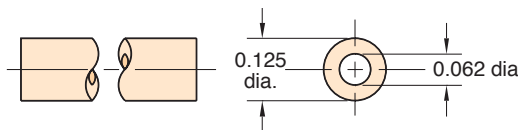
**Forming:** May be formed into sharp corners with heat

**Lengths Available:** 50' and 500'

**Bend Radius:** 3/8"

## VYH1-0402-CLT-□

1/16" I.D. 80A Vinyl Hose



**Note:**

Consult factory for custom colors

**Type:** Flexible, durable vinyl plastic hose

**Working Range:** 0 to 105 psig at 70°F maximum 60 psig at 80°F or above (max. temp. 100°F)

**Use With:** Hose fittings: [11752-2](#) and clamp [5000-4](#)

**Bend Radius:** 3x hose dia.

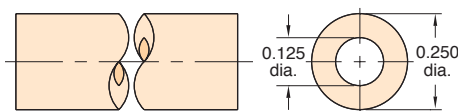
**Color:** Translucent: Clear

**Lengths Available:** 50' and 500'

**Bend Radius:** 3/8"

## VYH1-0804-CLT-□

1/8" I.D. 80A Vinyl Hose



**Note:**

Consult factory for custom colors

**Working Range:** 0 to 105 psig at 70°F maximum 60 psig at 80°F or above (max. temp. 100°F)

**Use With:** Hose fittings: [11752-1](#), [11752-3](#) and [11924](#)  
Hose clamps: [5000-2](#)

**Bend Radius:** 3x hose dia.

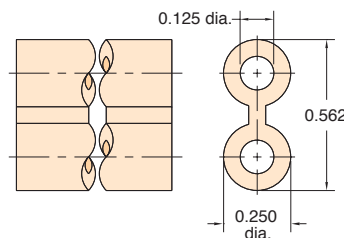
**Color:** Translucent: Clear

**Lengths Available:** 50' and 500'

**Bend Radius:** 1/2"

## VYH2-0804-GYS-□

1/8" I.D. Twin Vinyl Hose



**Type:** Flexible, durable vinyl plastic hose, but two hoses molded together, one side has rib entire length for identification

**Color:** Solid: Gray/Gray

**Use Clamp:** [5000-1](#)

**Working Range:** 0 to 150 psig at 70°F maximum 60 psig at 80°F or above (max. temp. 100°F)

**Use:** Ideal for feeding supply in on one line and out on the other, reduces labor; makes neat assembly; may be parted with any sharp cutting edge

**Lengths Available:** 50' and 500'

**Bend Radius:** 1/2"